

# Contents

## System Requirements

[Disk space](#)

[Hardware](#)

[Program start up](#)

## Main menu

[Viewing title and categories of sound effects](#)

[Playing a sound effect](#)

[Using a sound effect in another program](#)

## Searching for a specific sound effect

[Viewing title and categories of sound effects](#)

[Playing a sound effect](#)

[Using a sound effect in another program](#)

## Frequently asked questions

[Answers to the most common questions](#)

## Support

[Voice, fax, Internet e mail](#)

[Cosmi on the web](#)

## License agreement

[Reuse of sound effects](#)

## Acknowledgments

[ACKNOWLEDGMENTS](#)

[COPYRIGHT](#)

## **Disk space**

This program requires approximately 4 megabytes of storage space on your hard drive (often less). If you decide to save sound effects from the CD ROM to your hard drive you will require additional storage space.

## **Hardware**

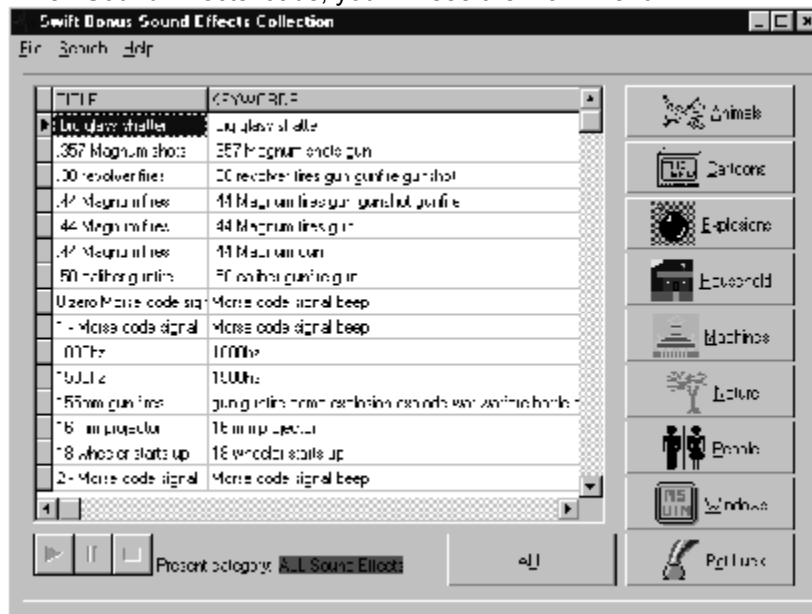
A mouse or other pointing device is required. You **MUST** have a multimedia kit (speakers, sound card) to use this program.

## Program start up

Click on the Sound Effects icon. THE CD ROM MUST BE IN THE CD ROM PLAYER! **THE PROGRAM WILL NOT WORK AT ALL** if you do not put the CD ROM in your CD ROM player.

# Viewing title and categories of sound effects

When Sound Effects loads, you will see the main menu:



*Main Menu*

The Title and Keywords for each sound effect are shown.

## Playing a sound effect

To play a sound effect, click on the START button from the VCR buttons located in the bottom left hand corner of the program's main menu:



*Start button*

The sound effect will then play. While the sound effect is playing, you may pause or stop the sound effect, again using the VCR buttons:



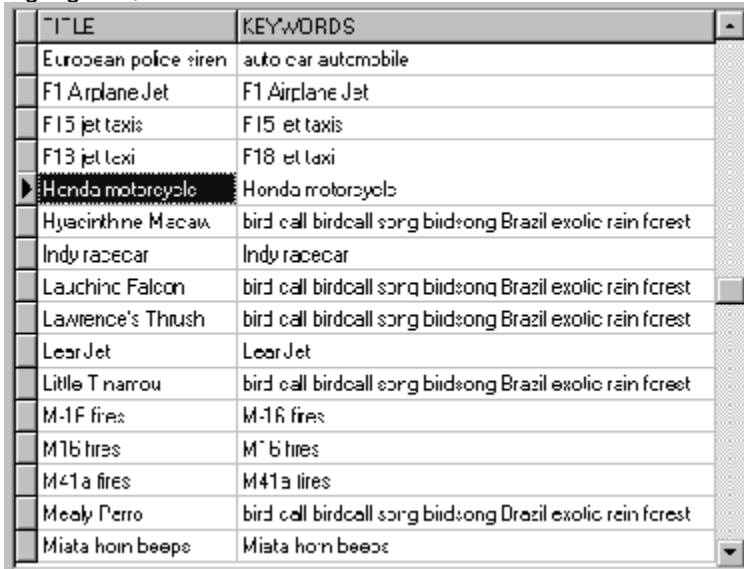
*Pause and stop buttons*

The yellow button (middle) pauses the sound effect. The red button (right) stops the sound effect.

The buttons are NOT lit when they are not enabled.

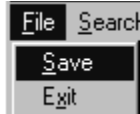
## Using a sound effect in another program

To use a sound effect in another program, you must SAVE the sound effect. To save a sound effect, first make sure that the sound effect you want to copy is selected. The selected sound effect will be highlighted, as illustrated below:



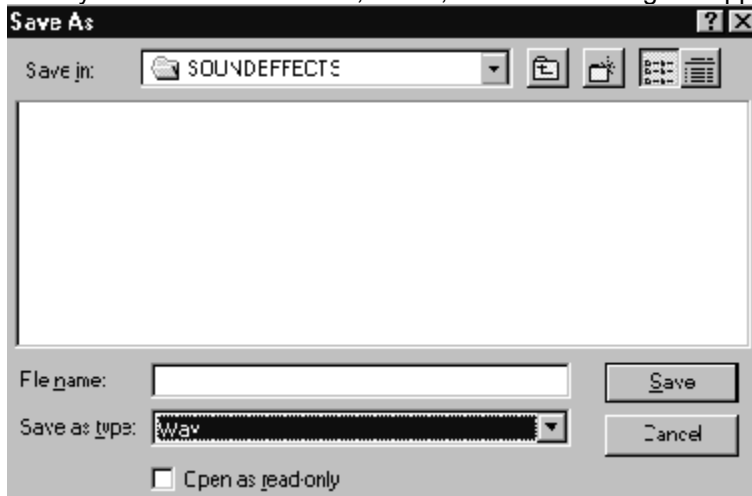
*In this illustration "Honda Motorcycle" is selected*

To save the sound effect, select FILE, SAVE from the main menu:



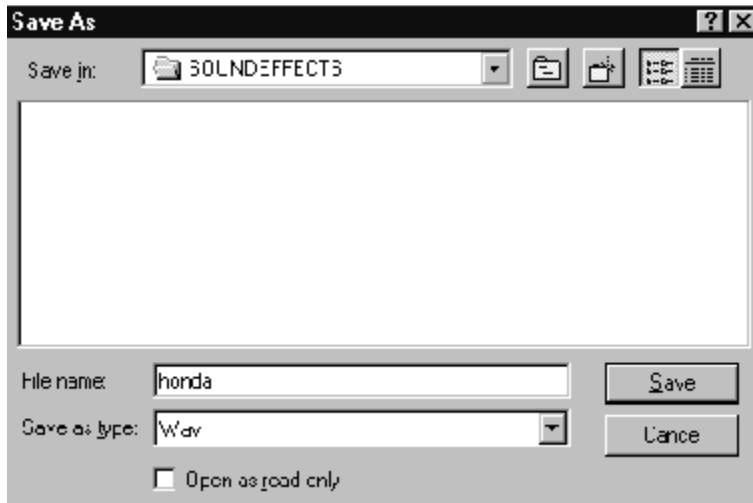
*File save from the main menu*

Once you have selected FILE, SAVE, a Save file dialog will appear:



*File, save dialog*

Select an appropriate name for the file, for example, Honda, and type it in File name:



*Save dialog after a name is entered*

Note that the program will append the extension "wav" to the file name that you choose.



# Viewing title and categories of sound effects

When 6,000 Sound Effects loads, you will see the main menu:



*Main Menu*

The Title and Keywords for each sound effect are shown.

## Playing a sound effect

To play a sound effect, click on the START button from the VCR buttons located in the bottom left hand corner of the program's main menu:



*Start button*

The sound effect will then play. While the sound effect is playing, you may pause or stop the sound effect, again using the VCR buttons:



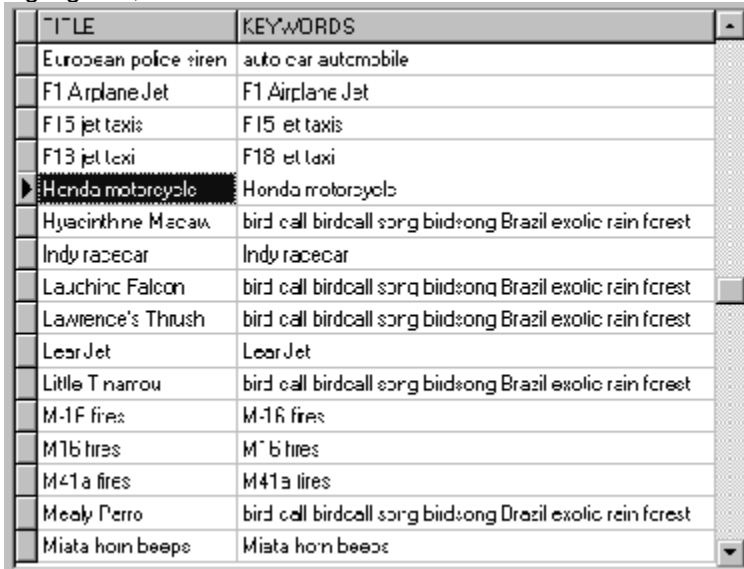
*Pause and stop buttons*

The yellow button (middle) pauses the sound effect. The red button (right) stops the sound effect.

The buttons are NOT lit when they are not enabled.

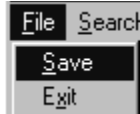
## Using a sound effect in another program

To use a sound effect in another program, you must SAVE the sound effect. To save a sound effect, first make sure that the sound effect you want to copy is selected. The selected sound effect will be highlighted, as illustrated below:



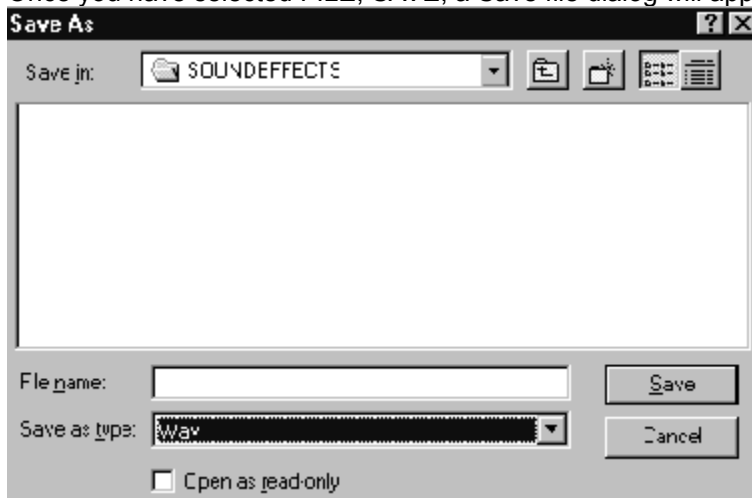
*In this illustration "Honda Motorcycle" is selected*

To save the sound effect, select FILE, SAVE from the main menu:



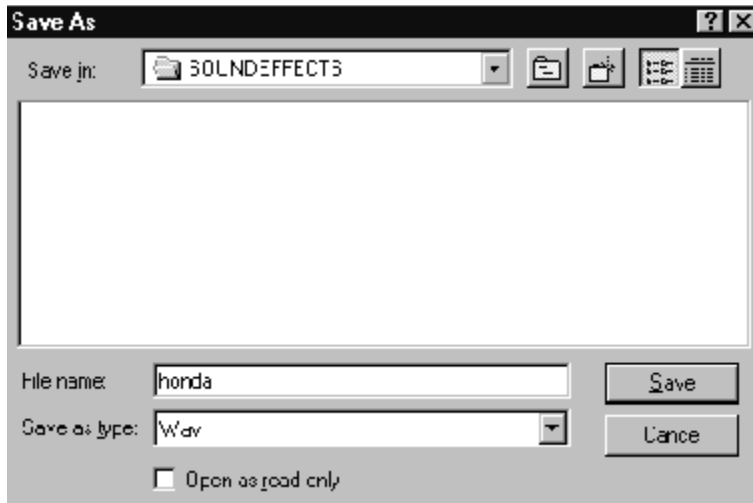
*File save from the main menu*

Once you have selected FILE, SAVE, a Save file dialog will appear:



*File, save dialog*

Select an appropriate name for the file, for example, Honda, and type it in File name:



*Save dialog after a name is entered*

Note that the program will append the extension "wav" to the file name that you choose.

## Answers to the most common questions

1. What type of files are stored in the program?

Answer: wav files

2. What is the sound quality of the sound effects?

Answer: Files are stored in 8,000 hz to 24,000 hz fidelity depending upon the specific effect.

3. What names can I save a sound effect from this program?

Answer: Any valid name under your version of Windows. We recommend that the file end with the extension wav. Your system almost always requires "wav" sound effects to have the file extension wav.

4. Can I use the sound effects on my web site?

Answer: Yes. The license agreement provides that you can use up to 150 sound effects without permission. Instructions for obtaining permission to use more than 150 sound effects are provided in the license agreement.

5. Are the sound effects copied onto my hard drive?

Answer: No! The sound effects are on the CD ROM. Only sound effects that you decide to copy for later use will be on your hard drive (or floppy disk).

6. What's a "Failure to initialize BDE" error?

Answer: This program uses the BDE routines to index and display the sound effects. If the BDE is not already on your system, the install program will provide the BDE files necessary. Many computers already have the BDE files. This error almost always means you did not install the program. You are free to use this program on more than one computer, so long as you use it on only one machine at a time. You cannot simply place the CD in the computer and run the program without installing the program first.

## **Voice, fax, Internet e mail**

We encourage our users to provide comments and suggestions about this program.

This program is supported by voice, fax and Internet. COSMI is proud to be one of the few computer software publishers who provide customer support without charge.

### **Voice**

Voice is available as follows (all times are in the Pacific time zone):

Monday through Thursday, 8:30am-12:00 noon and 1:00pm – 4:00 pm.

Friday, 8:30am-12 noon. You may call 310-886-3510 with your support questions.

### **Internet**

Support questions may be addressed to [support@cosmi.com](mailto:support@cosmi.com).

### **Fax**

You may fax us at 310-886-3517.

## **Cosmi on the web**

Join Cosmi on the world wide web at:

<http://www.cosmi.com>

You may also request customer service from our web site.

## Reuse of sound effects

This program is subject to Cosmi's standard single user license agreement. This license agreement is contained in the printed user manual, or on the CD jewel case. Sound effects in this collection may be used by the registered owner of the program without payment of any royalty in the following cases:

- (a) web pages- no more than 150 sound effects per site;
- (b) computer programs (including computer programs for resale), no more than 150 sound effects per program;
- (c) any computer generated application, 150 sound effects per application;
- (d) broadcast (no more than 150 sound effects per day.)

All other uses require permission. Permission will be granted in most cases without charge for other uses.

IN ALL CASES, you must either affix a copyright notice to the materials which can be either yours or:

Portions copyright 1998 Cosmi Corporation

**PERMISSIONS WILL ONLY BE GRANTED VIA EMAIL REQUEST.** Please provide the following:

Your name; mailing address, telephone number and contact time and, a brief description of your proposed use.

Email all requests to: [permissions@cosmi.com](mailto:permissions@cosmi.com)

**REPEAT: PERMISSIONS WILL ONLY BE GRANTED VIA EMAIL REQUEST.**



# **ACKNOWLEDGMENTS**

Executive producer, programming: Herb Kraft

Sound effects librarian: Eve Paludan

Bonus program programming: Georgia Schubert

Testing/QC: John Passo

# **COPYRIGHT**

This program is © 1998 Cosmi Corporation. All rights reserved.

